

Wireless PIR Detector

Quick Start Guide
V1.0.0



ZHEJIANG DAHUA VISION TECHNOLOGY CO., LTD.

Address: No.1199 Bin'an Road, Binjiang District, Hangzhou, P. R. China Postcode: 310053

Website: www.dahuasecurity.com Email: overseas@dahuatech.com

Tel: +86-571-87688883 Fax: +86-571-87688815

English

1 Checklist

2 Structure

| No. | Name |
|-----|---------------|
| 1 | Indicator |
| 2 | Tamper switch |
| 3 | On/off switch |
| 4 | Back cover |

3 Installation

3.1 Adding the PIR to the Hub and Testing Signal Strength

- Make sure that you have added the hub to the DMSS or COS Pro app.
- Make sure that the version of the DMSS app is 1.91 or later, and the hub is V1.001.0000000.0.R.210303 or later.

3.2 Field of View

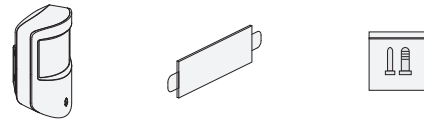
- a: Side view.
b: Top view.
c: Installation height.

When installing and using the PIR detector, make sure there are no objects partially or fully obscuring the detector's field of view.

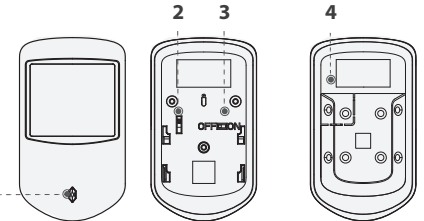
3.3 Installing the PIR Detector

Scan the QR code on the package to receive the user's manual for more information on the device and its installation procedures.

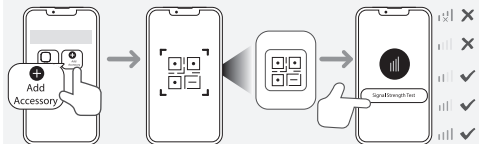
1



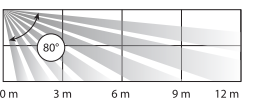
2



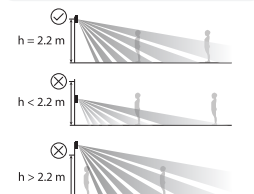
3.1



3.2



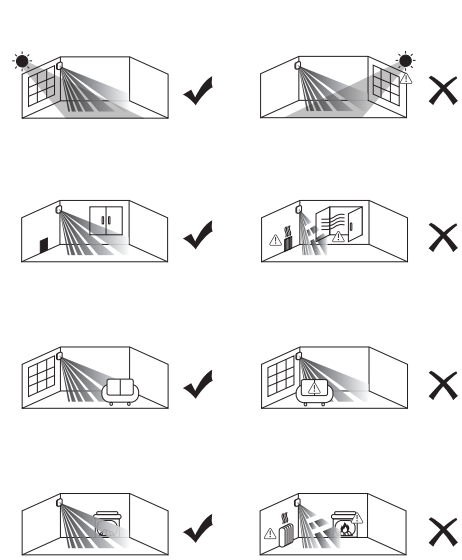
a



b

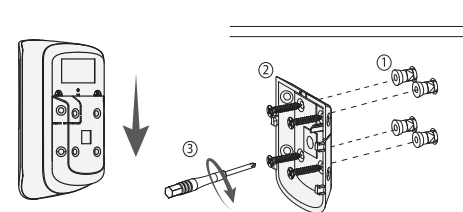
c

3.3

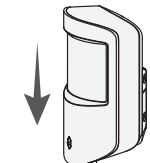


1

2



3



English

Important Safeguards and Warnings

This section introduces content covering the proper handling of the device, hazard prevention, and prevention of property damage. Read carefully before using the device, comply with the guidelines when using it, and keep the manual safe for future reference.

Operation Requirements

- Make sure that the power supply of the device works properly.
- Do not pull out the power cable of the device while it is powered on.
- Only use the device within the rated power range.
- Transport, use and store the device under allowed humidity and temperature conditions.
- Prevent liquids from splashing or dripping on the device.
- Make sure that there are no objects filled with liquid on top of the device to avoid liquids flowing into it.
- Do not disassemble the device.

Installation Requirements

- WARNING** Connect the device to the adapter before power on.
- Strictly abide by local electrical safety standards, and make sure that the voltage in the area is steady and conforms to the power requirements of the device.
- Do not connect the device to more than one power supply. Otherwise, the device might become damaged.
- Observe all safety procedures and wear required protective equipment provided for your use while working at heights.
- Do not expose the device to direct sunlight or heat sources.
- Do not install the device in humid, dusty or smoky places.
- Install the device in a well-ventilated place, and do not block the ventilator of the device.
- Use the power adapter or case power supply provided by the device manufacturer.
- The power supply must conform to the requirements of ES1 in IEC 62368-1 standard and be no higher than PS2. Note that the power supply requirements are subject to the device label.
- Connect class I electrical appliances to a power socket with protective earthing.

