



Watertight enclosure for emergency systems, equipped with illuminated push-button and 2 contacts 1NO+1NC that can be expanded up to 4 contacts. The enclosure has the pre-arrangement for use of green led to indicate the good condition of emergency circuit. It is pre-arranged with a short or long push-button for deliberate operation, or with an intrinsic safety function. Thanks to the emergency hammer, available as an accessory, sealable mask and halogen free materials are ideally suited for applications in areas open to public.

Prąd znamionowy (A)	125	Klasa Izolacji	II
Kolor	Czerwony RAL 3000	Śred. zewn. LxHxD (mm)	120x120x50
Ochrona IP	IP55	Montaż	Montaż naścienny
Materiał	Technopolimerowy	Odporność na wstrząsy	IK08
Prąd rozżarzonym drutem	400	Akcesoria w zestawie	Przycisk + 2 styki
Próba rozżarzonym drutem	650 °C	Temperatura robocza	-25 +60 °C
Rodzaj materiału	Bezhalogenowe zgodnie z normą EN 50267-2-2	Electrocod	0321
Liczba styków możliwych do zamontowania	4	Twardość kulkowa	70 °C
Norma	EN 60670-1 (CEI 23-48) IEC60670-24 CEI 23-49	Izolacja wyjściowe	750 V

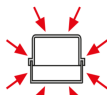


DIMENSIONAL

TECHNICAL SYMBOLOGY



II



IP55



IK08



650 °C



-25 +60 °C



EN 60754-2

Bezhalogenowe
zgodnie z normą EN
50267-2-2



EN 60695-10-2

70 °C

STANDARDS/APPROVALS





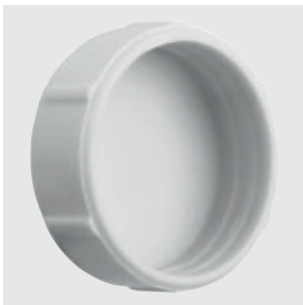
GW 40 422

CYLINDRICAL SECURITY LOCK - FOR 40 CDE (FRENCH STANDARD) ENCLOSURES

Code	Material	Pack Carton
GW 40 422	Pressure die-cast metal	1/10

ACCESSORIES SUPPLIED: 2 keys.

NOTES: All the keys and relative locks with the same product code are identical.



GW 44 622

SCREWCAPS IN INSULATING MATERIAL



Code	Description	For enclosures	Pack Carton
GW 44 622	Screwcap Ø16mm	GW42201	10/100

APPLICATIONS: used to maintain the double insulation and the original IP degree of protection of the boxes, containers and other GEWISS products.







GW 40 467

PLASTIC MODULE COVER PROFILE



Code	No. of modules EN 50022	Colour	Pack Carton
GW 40 467	4,5	White RAL 9016	50

CHARACTERISTICS: clip fixing.

		EQUIPPED WITH ILLUMINABLE PUSH-BUTTON						
								
	Code	GW 42 201						
	Colour	Red RAL 3000						
	Hammer	GW 42 216						
	Replacement glass	GW 42 211						
	Watertight cylinder security lock	-						
	NO	GW 74 201						
	NC	GW 74 202						
	Code	GW 30 951	GW 30 952	GW 30 943	GW 30 945	GW 30 958	GW 30 959	GW 30 960
	Voltage (V AC/DC)	12	24	230	110	12-24	110-230	48
	Power (W)	0.4	0.8	0.4	0.8			
	Light emission	White	White	Red	White	Green	Green	Green

42 RV

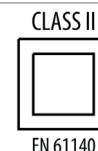
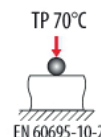
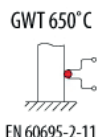
Surface- and flush-mounting watertight emergency enclosures

IP55 watertight enclosures, Red RAL 3000, available in 5 versions: with backlit push-button; can be equipped with 22 mm dia. mushroom button or with DIN rail coupling, the latter being available in Grey RAL 7035. The best seller is the GW42201, equipped with 1 NO contact and 1 NC contact and expandable up to 4 contacts, supplied with 1 long automatically operated push-button when glass is broken or short button for manual operation.



Technical characteristics page 1298

42 RV - WATERTIGHT ENCLOSURES FOR EMERGENCY MANOEUVRES - IP55



EQUIPMENT WITH ILLUMINABLE PUSH-BUTTON



GW 42 201

WATERTIGHT ENCLOSURE FOR EMERGENCY SYSTEMS, EQUIPPED WITH ILLUMINATED PUSH-BUTTON AND 2 CONTACTS 1NO+1NC THAT CAN BE EXPANDED UP TO 4 CONTACTS PRE-ARRANGEMENT FOR USE OF GREEN LED TO INDICATE THE GOOD CONDITION OF THE EMERGENCY CIRCUIT



Code	Outer dim. LxHxD (mm)	Colour	No. of contacts that can be installed	Pack Carton
GW 42 201	120x120x50	Red RAL 3000	4	1/10

CHARACTERISTICS: can be mounted on flush-mounting box GW24403. Contact-holder flange with 4 seats.

ACCESSORIES SUPPLIED: substitute button key for the possible configuration of manual or automatic activation when the glass is broken, self-adhesive pictograms "Break the glass" and "Press the button key", screwcaps for double insulation, screws and accessories for plumbing the front, 1 NO contact and 1 NC contact.

Sicur Push breakable glass.

NOTES: substitute NO contacts: GW74201, NC: GW74202; lamps for push-button backlighting: GW30951 12 V-/-, GW30952 24 V-/-, GW30943 230 V-/-; green LEDs for signalling the integrity of the emergency circuit: GW30958 for 12 to 24 V-/-, GW30959 for 110 to 230 V-/-, GW30960 for 48 V-/-;

To restore the double insulation use the relative screwcaps supplied.

Pre-arranged for installation of 4 contacts type NO or NC.

FITTED WITH HOLE Ø 22 MM



GW 42 204

WATERTIGHT ENCLOSURE FOR EMERGENCY SYSTEMS FITTED WITH HOLE Ø 22MM



Code	Outer dim. LxHxD (mm)	Colour	Pack Carton
GW 42 204	108x180x100	Red RAL 3000	1/10

ACCESSORIES SUPPLIED: Door fitted with lock with 2 keys, self adhesive pictogram "Break glass" and screwcaps for double insulation.

Sicur Push breakable glass.

To restore the double insulation, use the relative accessories supplied (module masks and screwcaps) or the brackets for surface-mounting (GW44621).

NOTES: compatible with momentary push-buttons, selectors and indicators Ø 22 mm of the 74 PS series.

COMPLEMENTARY ITEMS
GLASS BREAKER


GW 42 216

GLASS BREAKER WITH UNIVERSAL FIXING SUPPORT

Code	Colour	Support dimension (mm)	Pack Carton
GW 42 216	Toner black	70x60	1/10

CHARACTERISTICS: the hammer is joined to the base with a fine chain, so it can not be lost.

SPARE GLASS


GW 42 212

SPARE SICUR PUSH GLASS FOR WATERTIGHT ENCLOSURES FOR EMERGENCIES

Code	For enclosures	Pack Carton
GW 42 211	GW42201	1/10
GW 42 213	GW42204 GW42206 GW42207	1/10
GW 42 212	GW42202 GW42203 GW42208	1/10
GW 42 214	GW42231 GW42232	1/10



GW 32 457

SPARE BREAKABLE GLASS FOR PLATES FOR LIFTS/EMERGENCIES

Code	Suitable for	Pack Carton
GW 32 457	GW32450 GW32451 GW32452 GW32453	1/10

ACCESSORIES AND SPARE PARTS

MINIATURE LAMPS WITH WIRED LEAD

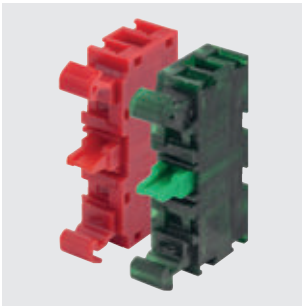
Code	Lamp voltage	Lamp power	Lamp	Light emitted	Pack Carton
GW 30 951	12V ac/dc	0.4 W	Incandescence	White	50
GW 30 952	24V ac/dc	0.8 W	Incandescence	White	50
GW 30 943	230 V ac	0.4 W	Fluorescent	Red	50
GW 30 945	110V ac/dc	0.8 W	Fluorescent	White	50



GW 30 958

SIGNALLING UNIT FOR INTEGRITY OF EMERGENCY CIRCUIT - WITH LEDS

Code	Lamp voltage	Lamp	Light emitted	Pack Carton
GW 30 958	12-24V ac/dc	LED	Green	10
GW 30 959	110-230V ac/dc	LED	Green	10
GW 30 960	48V ac/dc	LED	Green	10



CONTACTS - ITH 10A - 240V AC

Code	Type	Category of use 240V ac15	Category of use 240V dc13	Colour	For enclosure	Pack Carton
GW 74 201	1 NO	3 A	0.27 A	Green	GW42201	10/60
GW 74 202	1 NC	3 A	0.27 A	Red	GW42201	10/60

CHARACTERISTICS: GW74202, suitable for opening the contact also in the event of it slightly sticking, in conformity with the EN 60947-5-1 standard.
Clip assembly on the contact-holder flanges. Contacts compatible with emergency control unit GW42201.



GW 40 422

CYLINDRICAL SECURITY LOCK - SUITABLE FOR PLATES USED IN LIFTS/EMERGENCIES

Code	Material	Pack Carton
GW 40 422	Pressure die-cast metal	1/10

ACCESSORIES SUPPLIED: 2 keys.

NOTES: All the keys and relative locks with the same product code are identical.



GW 48 644

WATERTIGHT CYLINDRICAL SECURITY LOCK

Code	For enclosures	Material	Pack Carton
GW 48 644	48 PTC and 42 RV range	Pressure die-cast metal	1/10

ACCESSORIES SUPPLIED: 2 keys.

NOTES: All the keys and relative locks with the same product code are identical.



GW 48 645

KIT CONTAINING 4 LONG SELF-THREADING SCREWS WITH SPACERS FOR FIXING LIDS AND FRONTS

Code	Screw dimension (mm)	Spacer thickness (mm)	Pack Carton
GW 48 645	Ø 4x45	Max 10 mm reducible	1/100

CHARACTERISTICS: the kit can also be used for the following flush-mounting ranges: CD/CDK (starting from 6 modules), 48 CM and 42 RV.



GW 44 621

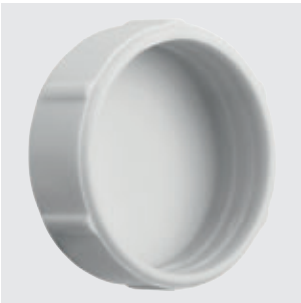
WALL FIXING BRACKET, COMPLETE WITH SELF-TAPPING SCREWS



Code	Suitable for	Pack Carton
GW 44 621	Enclosures 42 RV wall range	40/480

APPLICATIONS: used to maintain the double insulation and the original IP degree of protection of the boxes, containers and other GEWISS products.

ACCESSORIES SUPPLIED: 2 fixing screws.



GW 44 622

SCREWCAPS IN INSULATING MATERIAL



Code	Description	For enclosures	Pack Carton
GW 44 622	Screwcap Ø16mm	GW42201	10/100
GW 44 623	Screwcap Ø25mm	from GW42202 to GW42208	10/100

APPLICATIONS: used to maintain the double insulation and the original IP degree of protection of the boxes, containers and other GEWISS products.



GW 40 423

4.5 MODULES COVER - COLOUR WHITE



Code	No. of modules EN 50022	Colour	Pack Carton
GW 40 423	4.5	Grey RAL 7035	50

42 RV



EMERGENCY ENCLOSURE



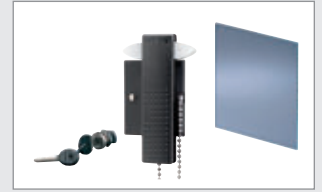
The GW42201 is equipped with illuminated push-button and 1NC and 1NA contacts that can be expanded up to 4 contacts and pre-arranged for use of green led to indicate the efficiency of emergency circuit

FUNCTIONALITY AND FLEXIBILITY IN ONE ITEM



Pre-arranged with a short or long push-button for deliberate operation, or with an intrinsic safety function.

COUNTLESS ACCESSORY COMBINATIONS



All the enclosures boast an IP55 high degree of protection and, thanks to the emergency hammer (available as an accessory), sealable mask and halogen-free materials, are ideally suited for applications in areas open to the public.

42 RV - WATERTIGHT ENCLOSURES FOR ALARM SIGNALLING AND EMERGENCY OPERATION - IP55

TECHNICAL CHARACTERISTICS (valid also for self-supporting plates)

Standard: IEC EN 60670-1 (CEI 23-48); IEC EN 60670-24 (CEI 23-49) (*)

Degree of protection: IP55

Protection against indirect contact: double insulation - □ (+)

Installation temperature: max. +60°C; min. -25°C (surface-mounting version)
max. +60°C; min. -15°C (flush-mounting version)

Rated voltage: 400V

Rated insulation voltage (Ui): 750V

Rated current: 125A

Material: GW PLAST technopolymer, halogen-free in accordance with CEI EN 60754-2 (CEI EN 50267-2-2)

Impact resistance: IK 08

Heat resistance: thermo-pressure with ball 70°C

Resistance to abnormal heat and fire: Glow wire test 650°C

(+) Complete insulation, in accordance with EN 61140 Standard, obtainable by using the screwcaps supplied.

(*) Type of casing: GP (CEI 23-51) and PD

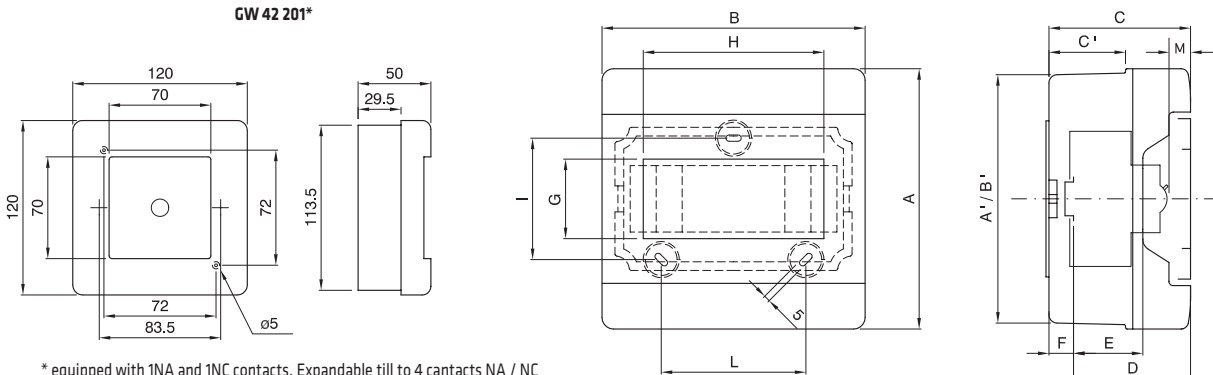
BEHAVIOUR WITH CHEMICAL AND ATMOSPHERIC AGENTS

Saline solution	Acids		Bases		Solvents				Mineral oil	UV rays
	Concentrated	Diluted	Concentrated	Diluted	Hexane	Benzol	Acetone	Ethyl alcohol		
Resistant	Not resistant	Resistant	Resistant	Resistant	Limited resistance	Not resistant	Not resistant	Limited resistance	Limited resistance	Limited resistance

Dimension tables

WATERTIGHT SURFACE-MOUNTING ENCLOSURES

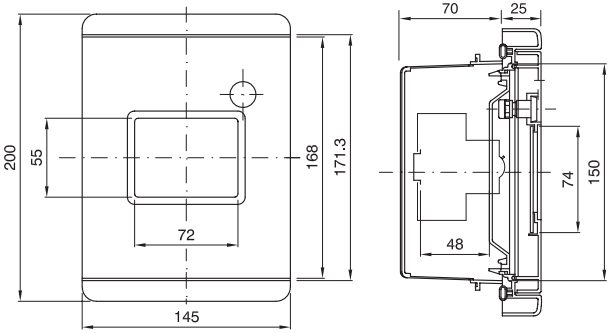
GW 42 201*



* equipped with 1NA and 1NC contacts. Expandable till to 4 contacts NA / NC

Code	Code	Overall dimensions						Modular assembly						Fixing		
		A	B	C	A'	B'	C'	D	E	F	G	H	M	NR	I	L
4M	GW 42 204	180	108	100	172	100	55	78	48	9.3	55	55	29	2	84	-
	GW 42 206															
	GW 42 207															
8M	GW 42 202	180	180	100	172	172	55	78.5	48	9.3	55	125	25	3	138	100
	GW 42 208															
	GW 42 203															

WATERTIGHT FLUSH-MOUNTING ENCLOSURES



SPARE "BREAKABLE" GLASS



Code	G'	H'
GW 42 201	79	79
4 MODULES	74	63
8 MODULES	74	142

Quick Reference

Code	Quantity		Page
	Pack/carton	Pallet	
GW 40 886	6	90	1368
GW 40 886 BD	6	0	1368
GW 40 886 BS	6	0	1368
GW 40 888	4	80	1368
GW 40 888 BS	4	0	1368
GW 40 889	3	45	1368
GW 40 889 BD	3	0	1368
GW 40 889 BS	3	0	1368
GW 40 890	2	48	1368
GW 40 890 BD	2	0	1368
GW 40 890 BT	2	0	1368
GW 40 891	1	24	1368
GW 40 891 BD	1	0	1368
GW 40 891 BQ	1	0	1368
GW 40 981 TB	1/2	80	1365
GW 40 981 VA	1/2	80	1365
GW 40 981 VT	1/2	80	1365
GW 40 991 TB	1/2	64	1365
GW 40 991 VA	1/2	64	1365
GW 40 991 VT	1/2	64	1365

GW41

GW 41 225 TB	16	128	1363
GW 41 225 TN	16	128	1363
GW 41 225 VA	16	128	1363
GW 41 225 VT	16	128	1363
GW 41 229 TB	12	192	1363
GW 41 229 TN	12	192	1363
GW 41 229 VA	12	96	1363
GW 41 229 VT	12	96	1363
GW 41 233 TB	5	150	1363
GW 41 233 TN	5	80	1363
GW 41 233 VA	5	40	1363
GW 41 233 VT	5	40	1363
GW 41 237 TB	12	240	1363
GW 41 237 TN	12	240	1363
GW 41 237 VA	12	240	1363
GW 41 237 VT	12	240	1363
GW 41 239 TB	5	60	1363
GW 41 239 TN	5	60	1363
GW 41 239 VA	5	60	1363
GW 41 239 VT	5	60	1363

GW42

GW 42 001	32	1024	1325
GW 42 002	44	704	1325
GW 42 003	32	512	1325
GW 42 004	16	512	1325
GW 42 005	21	336	1325
GW 42 006	16	256	1325
GW 42 007	10	160	1325
GW 42 008	10	250	1325
GW 42 009	8	128	1325
GW 42 010	5	80	1325
GW 42 201	1/10	900	1292
GW 42 202	1/10	200	1293
GW 42 203	1/10	200	1293
GW 42 204	1/10	400	1292
GW 42 206	1/10	400	1293
GW 42 207	1/10	160	1293
GW 42 208	1/10	200	1293
GW 42 211	1/10	1440	1295
GW 42 212	1/10	1280	1295
GW 42 213	1/10	3120	1295
GW 42 214	1/10	1440	1295

Code	Quantity		Page
	Pack/carton	Pallet	
GW 42 216	1/10	1600	413
GW 42 216	1/10	1600	1295
GW 42 231	1/10	240	1293
GW 42 232	1/10	200	1293

GW43

GW 43 021 S	1	120	1274
GW 43 022 S	1	91	1274
GW 43 023 S	1	48	1274
GW 43 024 S	1	33	1274
GW 43 040 S	100	31200	1279
GW 43 041 S	1	0	1277
GW 43 042 S	2/20	6240	1278
GW 43 044 S	10/100	3600	1279
GW 43 045 S	10	0	1277
GW 43 047 S	1	100	1276
GW 43 048 S	1	100	1276
GW 43 049 S	1	100	1276
GW 43 052 S	1/10	1280	1279
GW 43 055 S	1	20	1275
GW 43 056 S	1	16	1275
GW 43 057 S	1/5	10	1275
GW 43 058 S	1	33	1275
GW 43 071 S	1/4	364	1275
GW 43 072 S	1/4	224	1275
GW 43 073 S	1/2	200	1275
GW 43 074 S	1/2	160	1275
GW 43 081 S	1	16	1275
GW 43 082 S	1	16	1275
GW 43 083 S	1	20	1275
GW 43 085 S	1	20	1275
GW 43 101 S	1	80	1276
GW 43 102 S	1	80	1276
GW 43 103 S	1	80	1276
GW 43 104 S	1	80	1276
GW 43 111 S	1	0	1276
GW 43 112 S	1	32	1276
GW 43 113 S	1	20	1276
GW 43 114 S	1	6	1276
GW 43 122 S	10/100	0	1278

GW44

GW 44 001	5/280	8400	1303
GW 44 002	5/135	4725	1303
GW 44 003	5/90	4050	1303
GW 44 004	66	1980	1304
GW 44 005	66	1980	1304
GW 44 006	40	1000	1304
GW 44 007	24	600	1304
GW 44 008	12	300	1304
GW 44 009	6	150	1304
GW 44 010	4	100	1304
GW 44 011	3	60	1304
GW 44 024	66	1980	1303
GW 44 026	40	1000	1303
GW 44 051	5/280	5600	1307
GW 44 051 R	5/280	5600	1307
GW 44 052	5/135	2700	1307
GW 44 053	5/90	2520	1307
GW 44 053 R	5/90	2520	1307
GW 44 054	66	1980	1307
GW 44 054 R	66	1320	1308
GW 44 055	66	660	1308
GW 44 056	40	800	1307
GW 44 056 R	40	640	1308

Code	Quantity		Page
	Pack/carton	Pallet	
GW 44 057	24	384	1308
GW 44 058	12	192	1308
GW 44 059	6	96	1308
GW 44 060	4	64	1308
GW 44 061	3	36	1308
GW 44 114	1/45	900	1306
GW 44 117	1/16	256	1306
GW 44 118	1/12	192	1306
GW 44 119	1/7	84	1306
GW 44 120	1/3	60	1306
GW 44 137	1/16	128	1306
GW 44 138	1/12	192	1306
GW 44 139	1/7	84	1306
GW 44 140	1/3	60	1306
GW 44 204	105	2625	1305
GW 44 205	91	2730	1305
GW 44 206	50	1250	1305
GW 44 207	30	750	1305
GW 44 208	14	350	1305
GW 44 209	6	180	1305
GW 44 210	4	100	1305
GW 44 211	3	75	1305
GW 44 214	45	900	1305
GW 44 215	55	880	1305
GW 44 216	24	600	1305
GW 44 217	16	384	1305
GW 44 218	12	240	1305
GW 44 219	7	140	1305
GW 44 220	3	75	1305
GW 44 221	2	50	1305
GW 44 234	105	2625	1305
GW 44 236	50	1250	1305
GW 44 254	45	360	1309
GW 44 255	55	220	1309
GW 44 256	24	96	1309
GW 44 257	16	240	1309
GW 44 258	12	144	1309
GW 44 259	7	84	1309
GW 44 260	3	48	1309
GW 44 261	2	32	1309
GW 44 274	105	420	1309
GW 44 275	91	1820	1309
GW 44 276	50	800	1309
GW 44 276 C	50	800	1309
GW 44 277	30	480	1309
GW 44 277 C	30	480	1309
GW 44 278	14	224	1309
GW 44 279	6	120	1309
GW 44 280	4	64	1309
GW 44 281	3	48	1309
GW 44 404	108	1728	1310
GW 44 405	108	1728	1310
GW 44 406	50	800	1310
GW 44 407	32	512	1310
GW 44 408	14	224	1310
GW 44 409	6	120	1310
GW 44 410	4	64	1310
GW 44 411	3	48	1310
GW 44 414	45	360	1310
GW 44 415	55	220	1310
GW 44 416	24	384	1310
GW 44 417	16	240	1310
GW 44 418	12	144	1310
GW 44 419	7	84	1310